



RECP #: 753775

RECORDED 5/23/2019 AT 12:59 PM BK# 2622 PG# 1610
Debra K. Lee, CLERK OF LARAMIE COUNTY, WY PAGE 1 OF 1

STATE OF WYOMING CORNER RECORD

(In compliance with the CORNER PERPETUATION AND FILING ACT, Wyoming Statutes, 1997 Section 33-29-140, et. seq., and the Rules and Regulations of the Board of Registrations for Professional Engineers and Professional Land Surveyors)

SOUTHEAST CORNER SECTION 34 T. 18 N., R. 61W., 6TH P.M., LARAMIE COUNTY, WYOMING

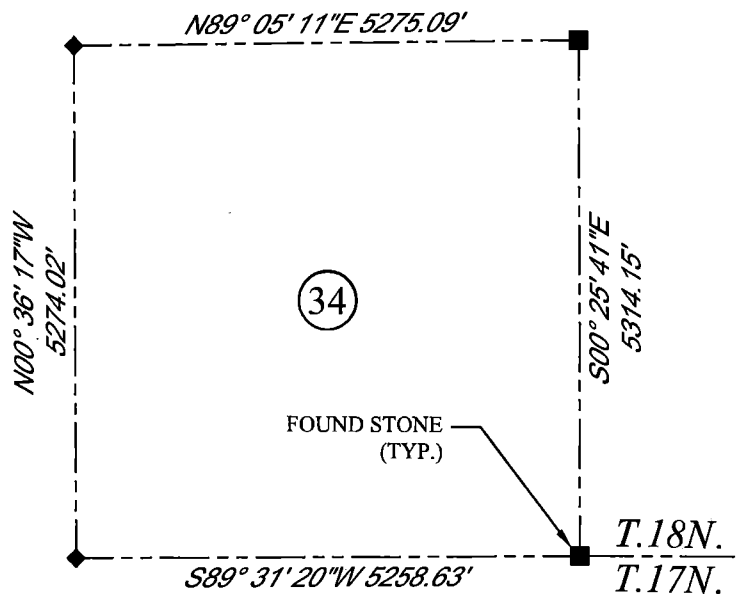
GLO: SET A SANDSTONE 16X12X4, 11 IN. DEEP WITH 4 MARKS ON THE WEST AND 2 ON THE EAST FACE FOR CORNER TO SECTIONS 2,3,34 AND 35.

FOUND: A FIRM SET STONE APPROXIMATELY 15X13X4 MEASURED ABOVE GROUND WITH 2 NOTCHES ON EAST EDGE AND 4 NOTCHES ON WEST EDGE.

SET: SET ALUMINUM CAP ON EAST SIDE OF STONE APPROXIMATELY 6 IN. ABOVE GROUND SURFACE.



SCALE: NONE
NORTH DETERMINED BY
G.P.S OBSERVATIONS



SET 3.25" ALUMINUM CAP, STAMPED AS SHOWN



DATE OF FIELD WORK: 10/26/2018 OFFICE REFERENCE: MERIDEN

LEGEND:

- FOUND BLM CAP
- ⊙ FOUND USFS CAP
- FOUND STONE
- ◻ FOUND PRIVATE MONUMENT
- ◆ CALCULATED POSITION
- ▲ SET MONUMENT (LS10245)
- SECTION LINE

CROSS INDEX DIAGRAM

	1	2	3	4	5	6	7	8	9	10	11	12	13	14	15	16	17	18	19	20	21	22	23	24	25
A																									
B																									
C																									
D																									
E																									
F																									
G																									
H																									
J																									
K																									
L																									
M																									
N																									
O																									
P																									
Q																									
R																									
S																									
T																									
U																									
V																									
W																									
X																									
Y																									
Z																									

WOOD
2615 AVIATION DRIVE
SHERIDAN, WY 82801
PH: 307-675-6400



THIS CORNER RECORD WAS
PREPARED BY ME OR UNDER
MY DIRECTION AND
SUPERVISION,
SEAL AND SIGNATURE

